

## Description

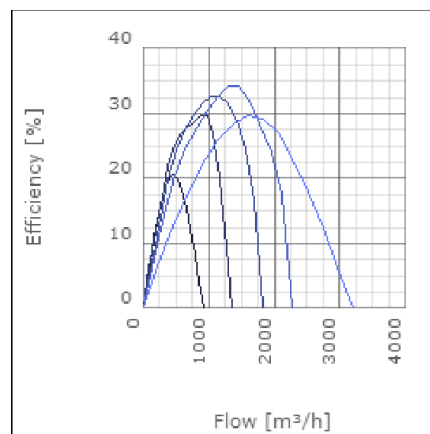
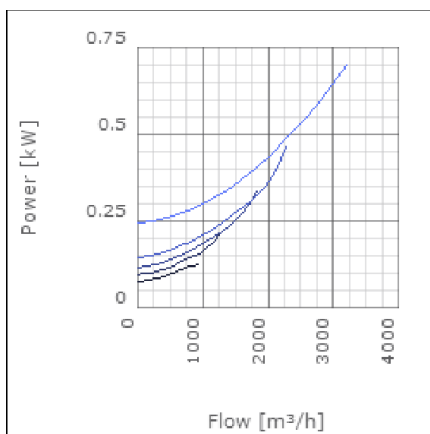
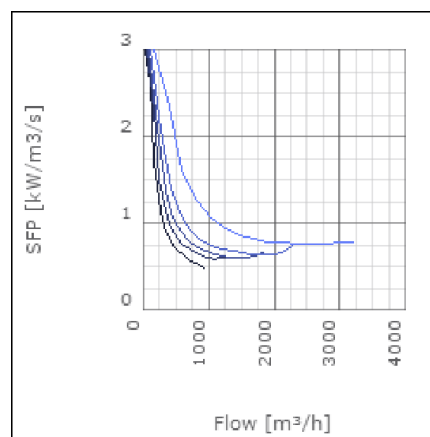
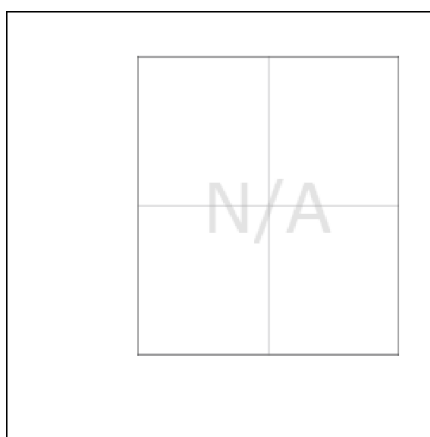
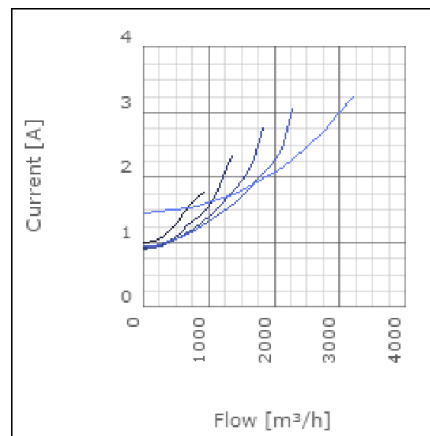
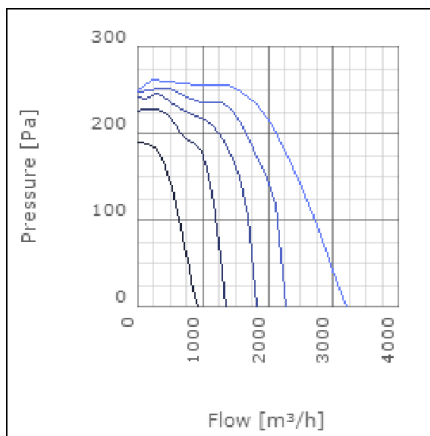
IRE is a range of insulated in-line centrifugal duct fans. They provide high pressure with low sound level. The IRE fans have good sound and fire insulation qualities provided by a 50mm pad of mineral wool. The high quality ball bearing mounted external rotor motors are maintenance free. They can be speed controlled from 0-100% by voltage variation. All motors are protected by approved thermo contacts. All 3-phase motors have ready fitted thermo contact leads for alarm functions etc. The fans have a strong galvanized steel housing incorporating a swing out design of the fan motor and impeller for easy cleaning and inspection.



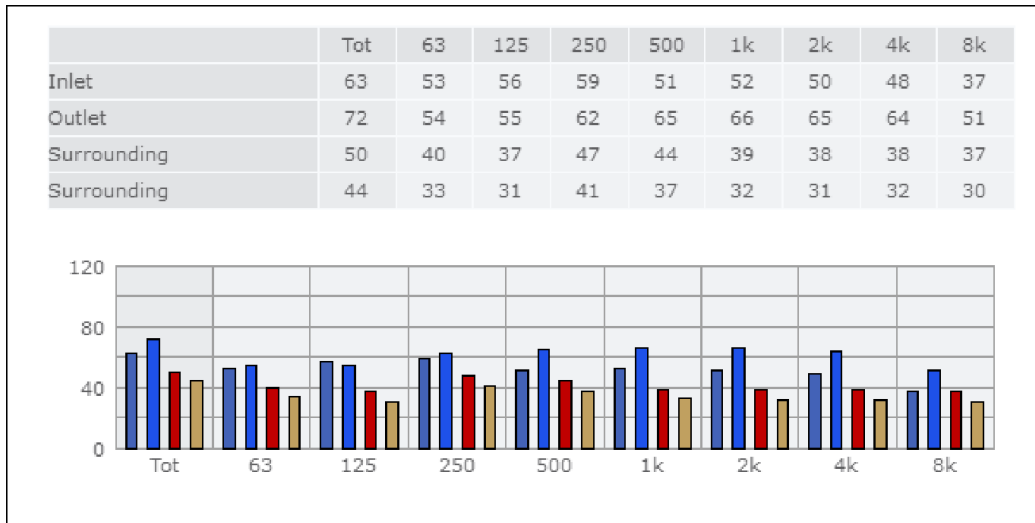
## Technical data

Parameter	Value	Unit
Voltage	230	V
Phase	1	~
Frequency	50	Hz
Power	0.74	kW
Current	3.3	A
R.p.m.	850	r/m
Max. temperature of transported air	80	°C
Max. temperature of transported air when speed-controlled	80	°C
Sound pressure level at 3 m	43	dB(A)
Length	832	mm
Width	777	mm
Height	585	mm
Weight	66	kg
Enclosure class, motor	44	IP
Insulation class, motor	F	
Capacitor	16	µF
Duct connection	ø500 mm	

## Diagrams



## Sound



### Parameter

Distance: 3.000  
 Propagation type: Hemi-spherical  
 Equivalent absorption area: 20.00

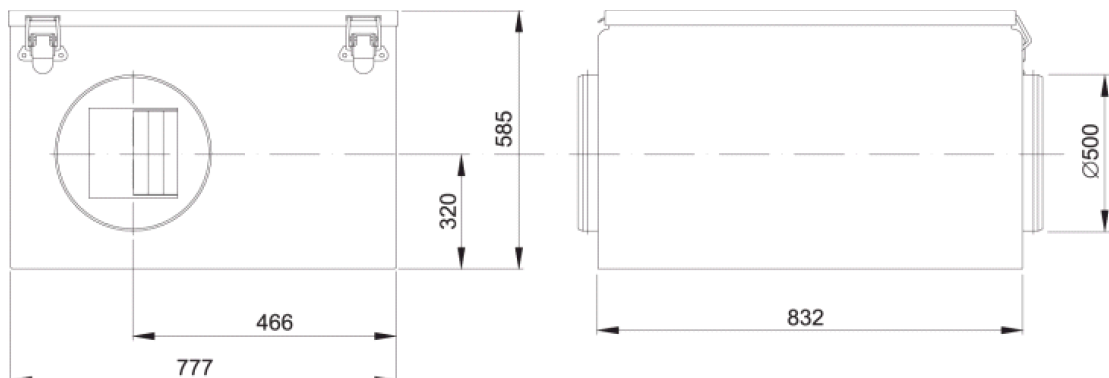
### Checked point

Flow 1615.108m<sup>3</sup>/h  
 Static pressure 249Pa

### Working point

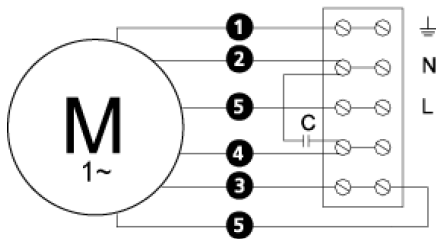
Flow 1615.592m<sup>3</sup>/h  
 Static Pressure 249Pa  
 Power 0.38kW  
 Speed 0r/m  
 Current 1.86A  
 Voltage 230V  
 Efficiency 29.718%  
 SFP 0kW/m<sup>3</sup>/s

## Dimensions



## Wiring diagram

4040005



- Ⓜ = Fan Motor
- Ⓜ1 = Fan Motor
- Ⓜ2 = Fan Motor
- Ⓜ3 = Rotor Motor
- ① = Yellow/Green
- ② = Black
- ③ = Blue
- ④ = Brown
- ⑤ = White (TW)
- ⑥ = Orange
- ⑦ = Grey
- ⑧ = Red
- ⑨ = Green
- ⑩ = Violet

## Accessories

ETFV-94A  
 FRE 6  
 VRDE 7  
 VRS 4,0  
 VRTE 5

## Electrical accessories

BSV 500